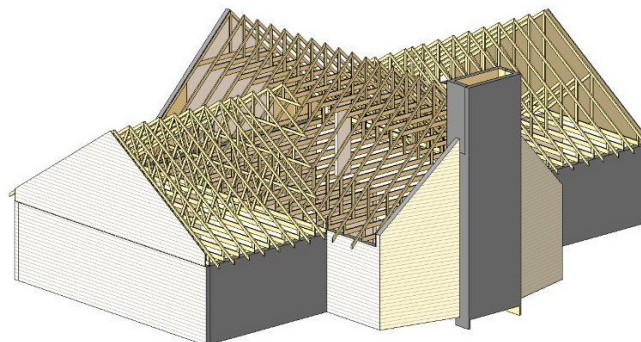


Truss+ 2010.3

Truss+ application for Revit® Architecture and Revit® Structure provides a set of powerful tools for roof wood framing.

Supports metric and imperial unit systems
Language: English



There are three ways to create roof framing:

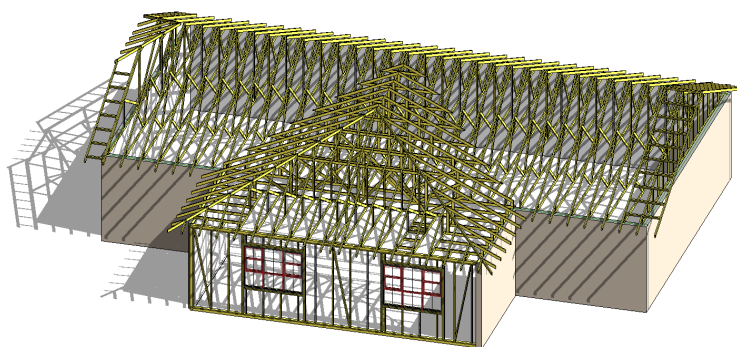
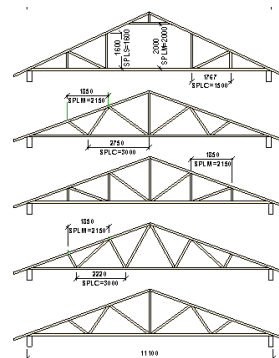
- Using 3D Truss System Grid
- Using model lines
- Mixed (you can use 3D Truss System Grid and model lines)

How to do input and modify of roof framing parameters **easily**?

Special 3D Truss System Grid was created for it. This tool helps to work and frame roof hips, gables, barn ends, "L" returns and valley sets very easy.

You just have to select the roof and its boundary lines to define which end of the roof you want to frame at this moment. Choose framing type (Step Down, Terminal, Midwest, California, etc.), modify truss distribution parameters (if it's needed) and then you will get 3D Truss System Grid in the correct place. You can check and modify 3D Grid basic parameters incl. Jack distribution configuration.

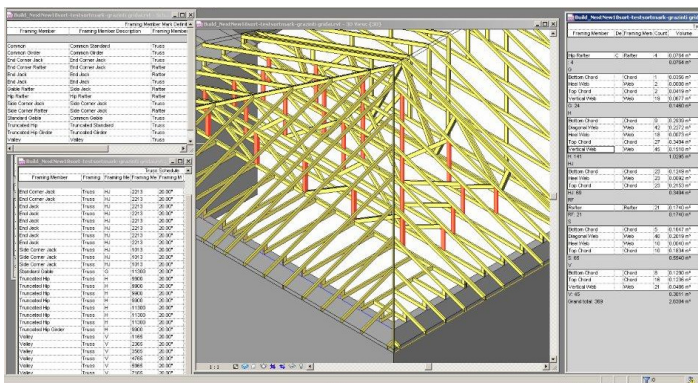
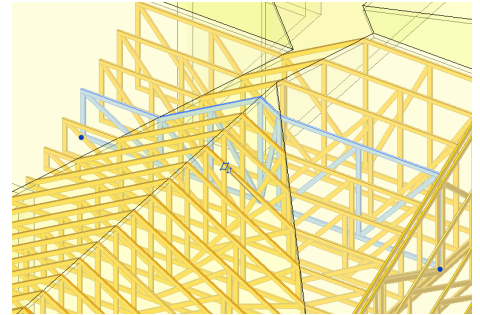
Truss Database Manager helps to edit or create new types of parametrical wood trusses "4t4r" quickly with one click for all categories: common (incl. "Room in Roof"), gable, hip, valley... The configurator of Truss Design Settings includes Jack Expert and other functions for designation the right type of truss at the right place. As well, you can configure type-span-panel related parameters for common, truncated, gable, attic, mono pitch, valley, girder, hips and jack trusses.



Tens of trusses will be automatically generated by 3D Truss Generator in several minutes (one truss per 2-3 sec.). There are included functions for truss type modifying, truss auto-copying and ends of truss cutting.

Just place Model Line in desirable place and using Truss+ application create Truss or 3D Truss System Grid in place of it.

By using the “Insert truss by selected model line” function you will get any truss you want according to the roof geometry. Just select a model line, a truss type and modify truss parameters.



Flexible scheduling technology is introduced in Truss+ software. It allows quickly define how mark and sort different roof framing members and elements like truss webs and chords.

The Sort function groups, sorts and numbers framing members and elements according predefined solutions. Main types of schedules as examples are included with software installation.

More information: www.tools4revit.com