


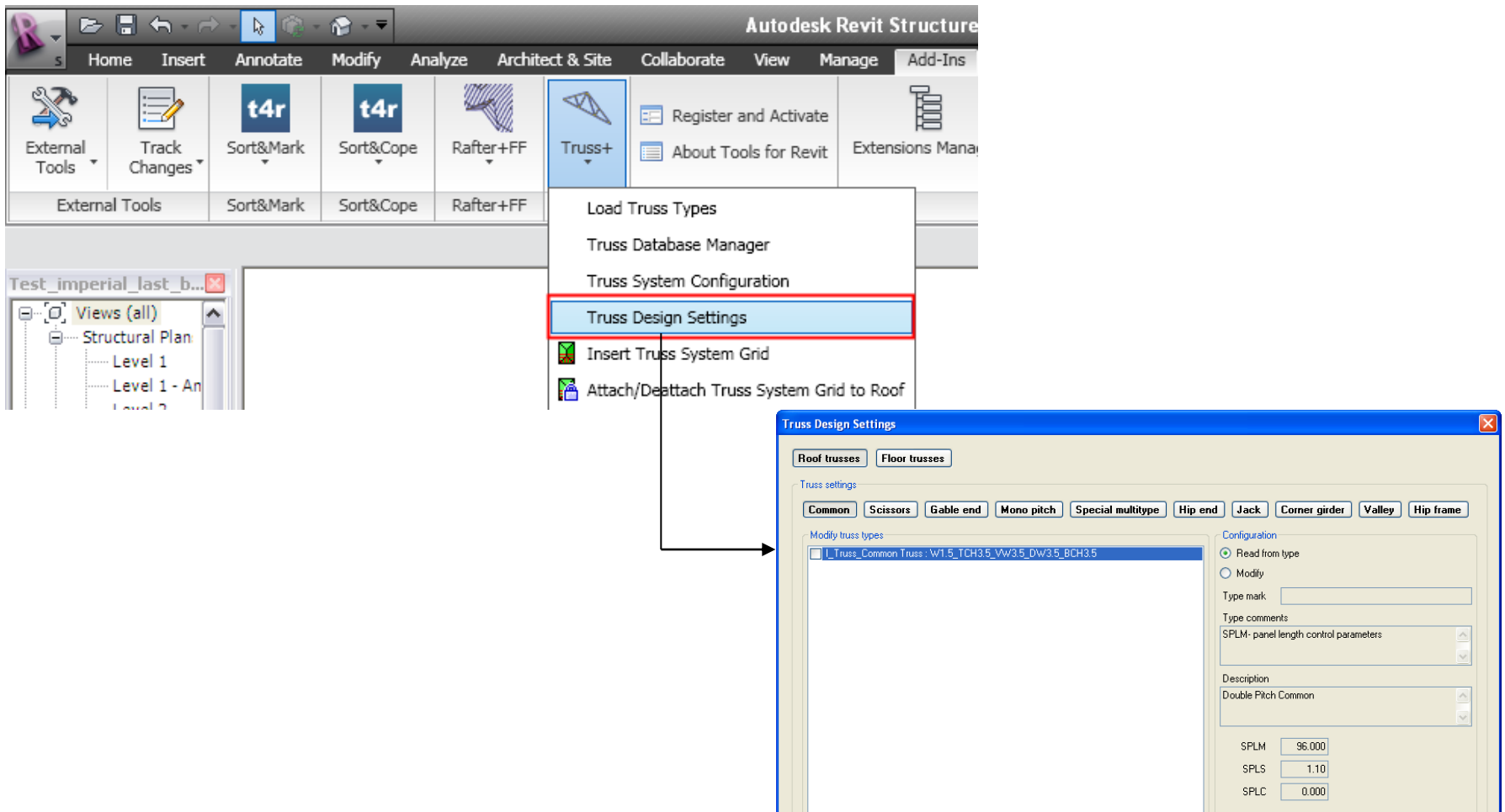


Truss+ 2010
Truss Design Settings



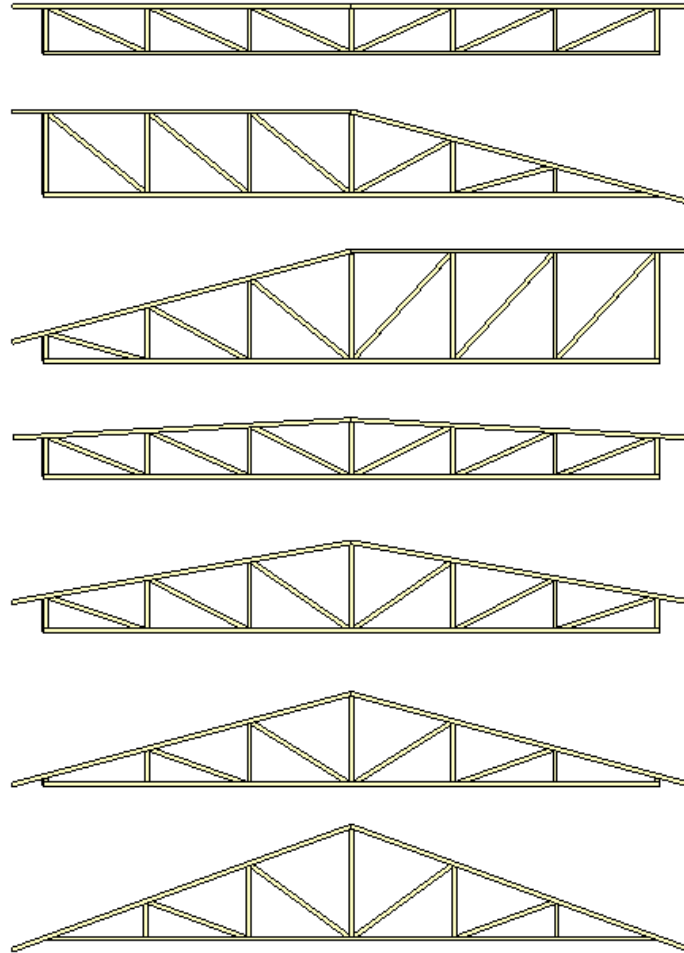
Starting Truss Design Settings

- Choose *Truss Design Settings* directly from “Truss+” menu.



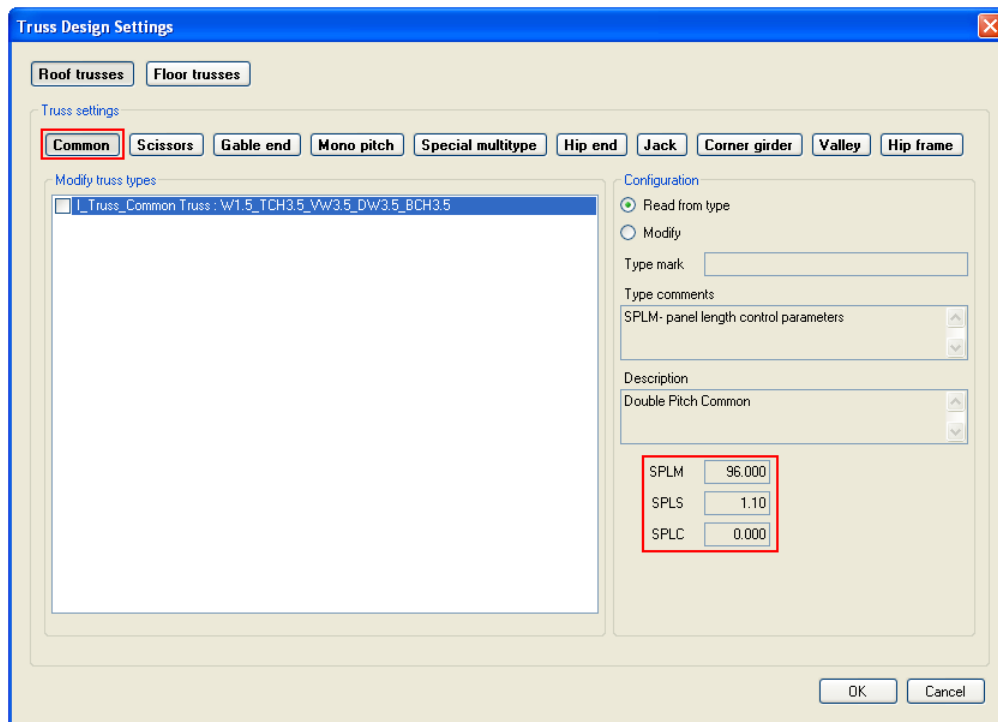
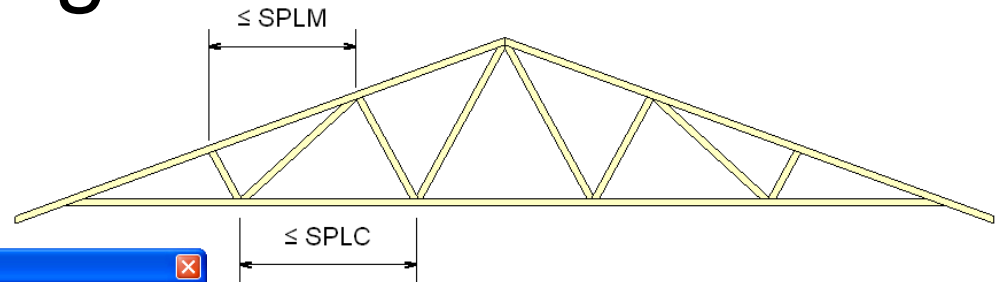
Truss Design Settings – Common Truss

- Various states of the one type truss.



Truss Design Settings – Common Truss

- The function *Truss Design Settings* is very useful for modification of truss parameters.

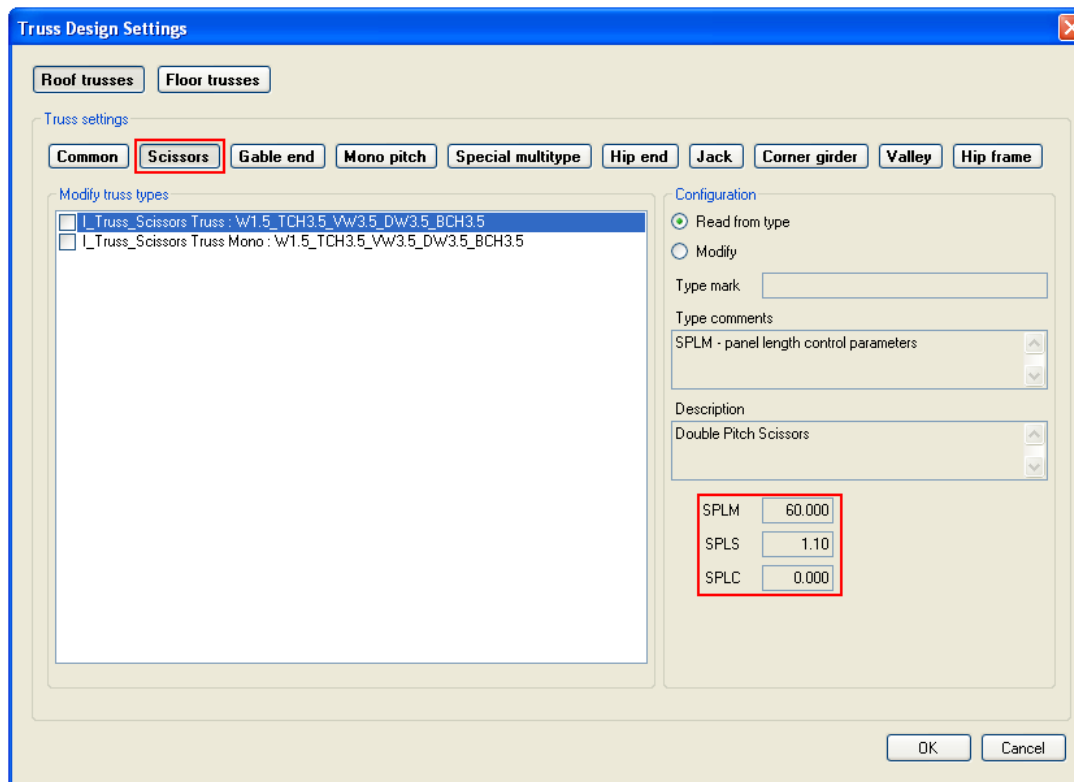
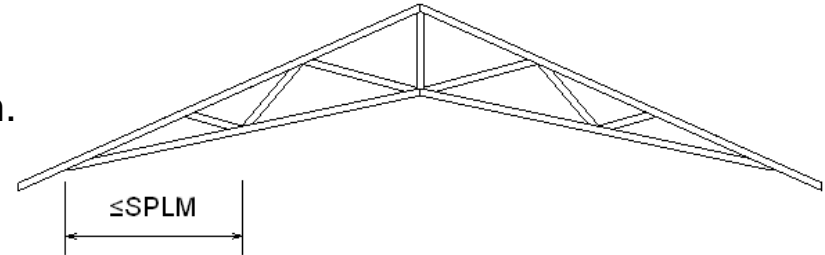


- SPLM is a maximum value of a panel length for a top chord. If it's exceeded, then the panel is divided with an additional web element.
- SPLS is a control value of the panel length for a bottom chord.
- SPLC is an additional control parameter.
- All these parameters can be modified in elements 'Type Properties' dialog.
- About Instance parameters please read the "Modify Truss" topic.

Note. If value of any control parameter is equal to zero, this parameter isn't used.

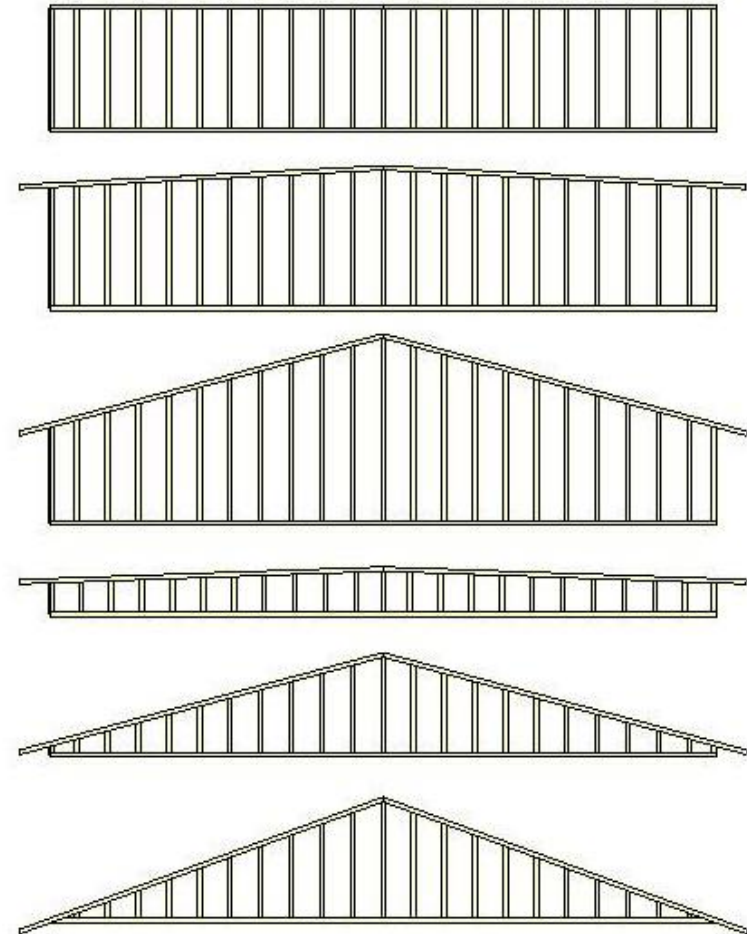
Truss Design Settings – Scissors Truss

- SPLM is the maximum value of the panel length. If it's exceeded, then the panel is divided with an additional web element.



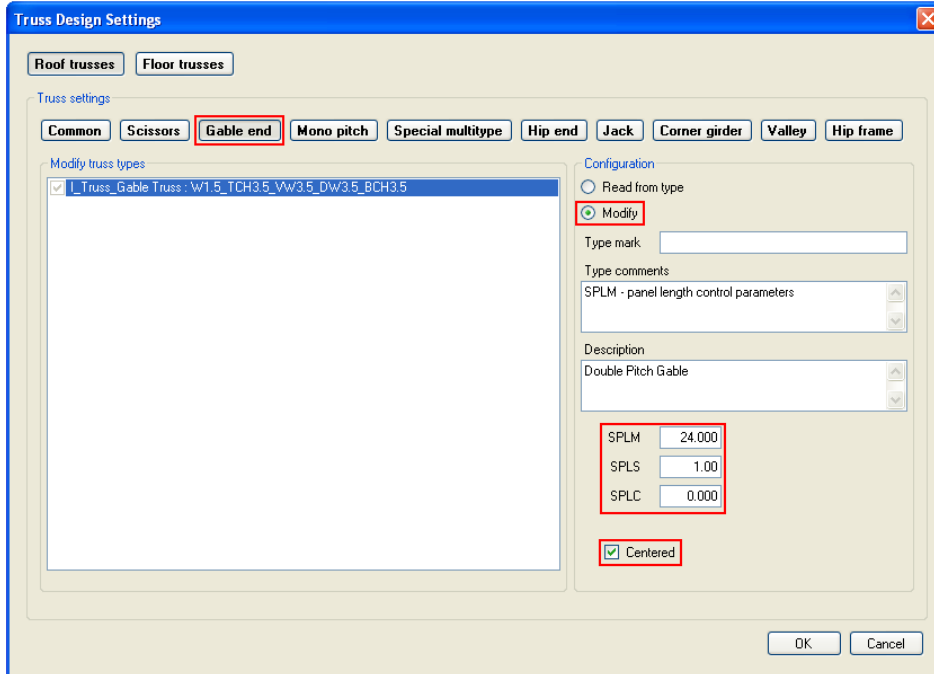
Truss Design Settings – Gable End Truss

- Various states of the one type truss.



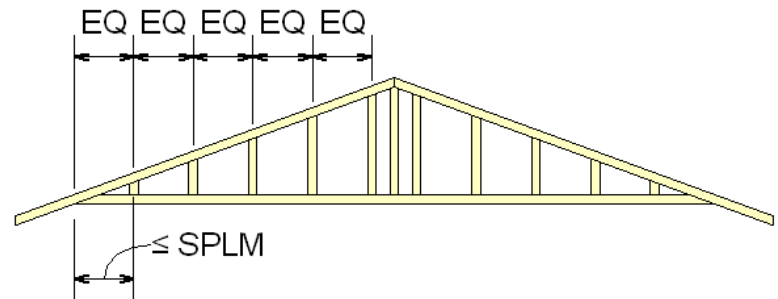
Truss Design Settings – Gable End Truss

- SPLM is the maximum value of the panel length. If it's exceeded, then the panel is divided with an additional web element.



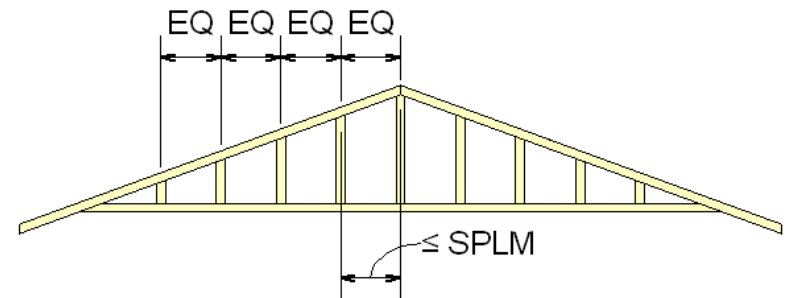
- Non Centered Gable end truss

Centered



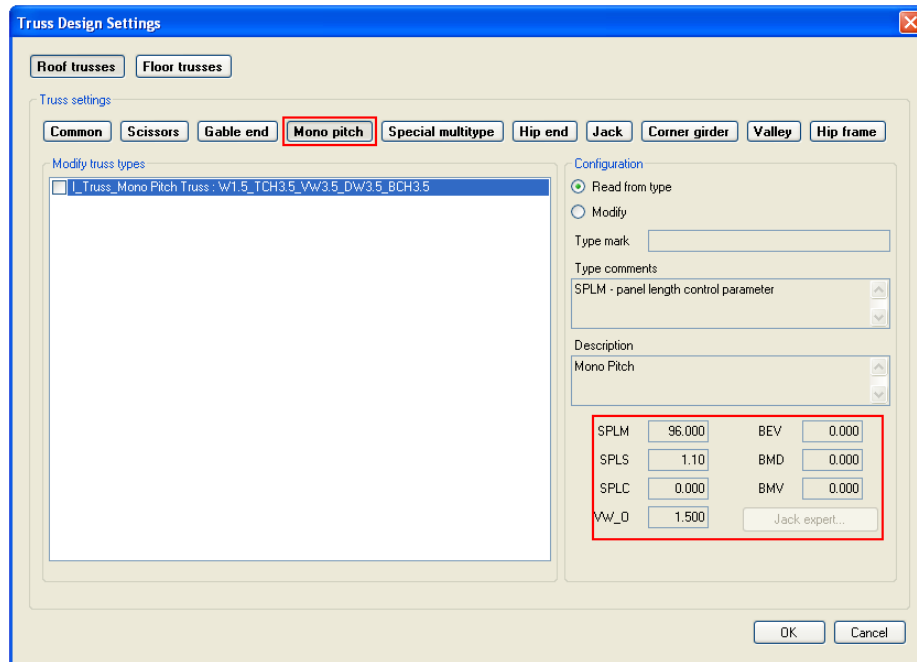
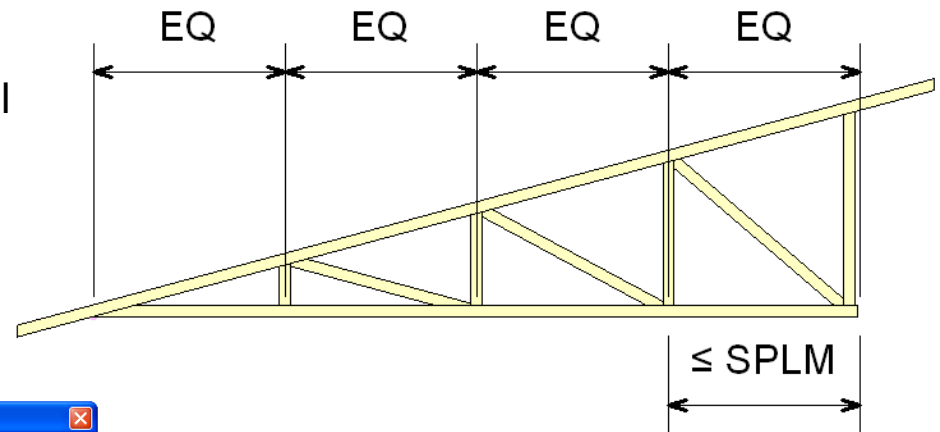
- Centered Gable end truss

Centered



Truss Design Settings – Mono Pitch Truss

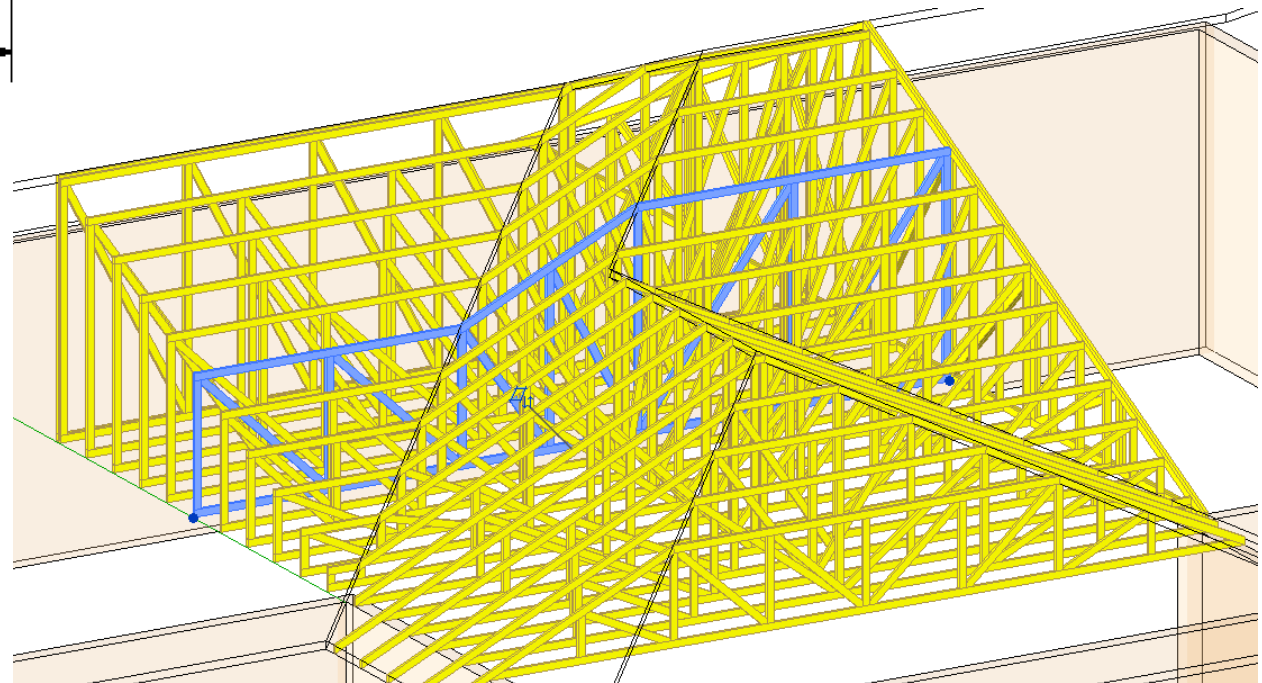
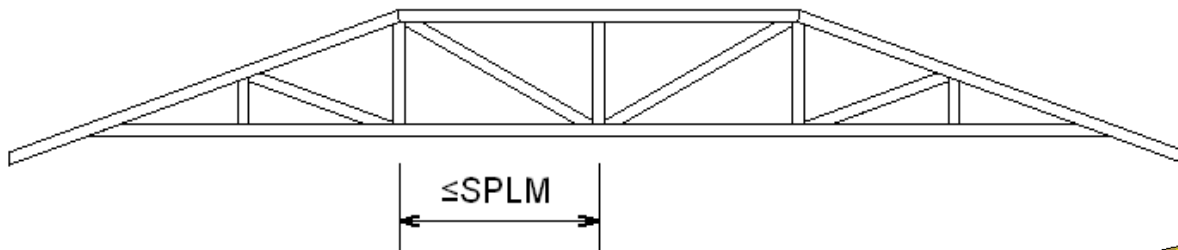
- SPLM is the maximum value of the panel length. If it's exceeded, then the panel is divided with an additional web element.



Note. For the mono pitch truss *Jack expert* is closed.

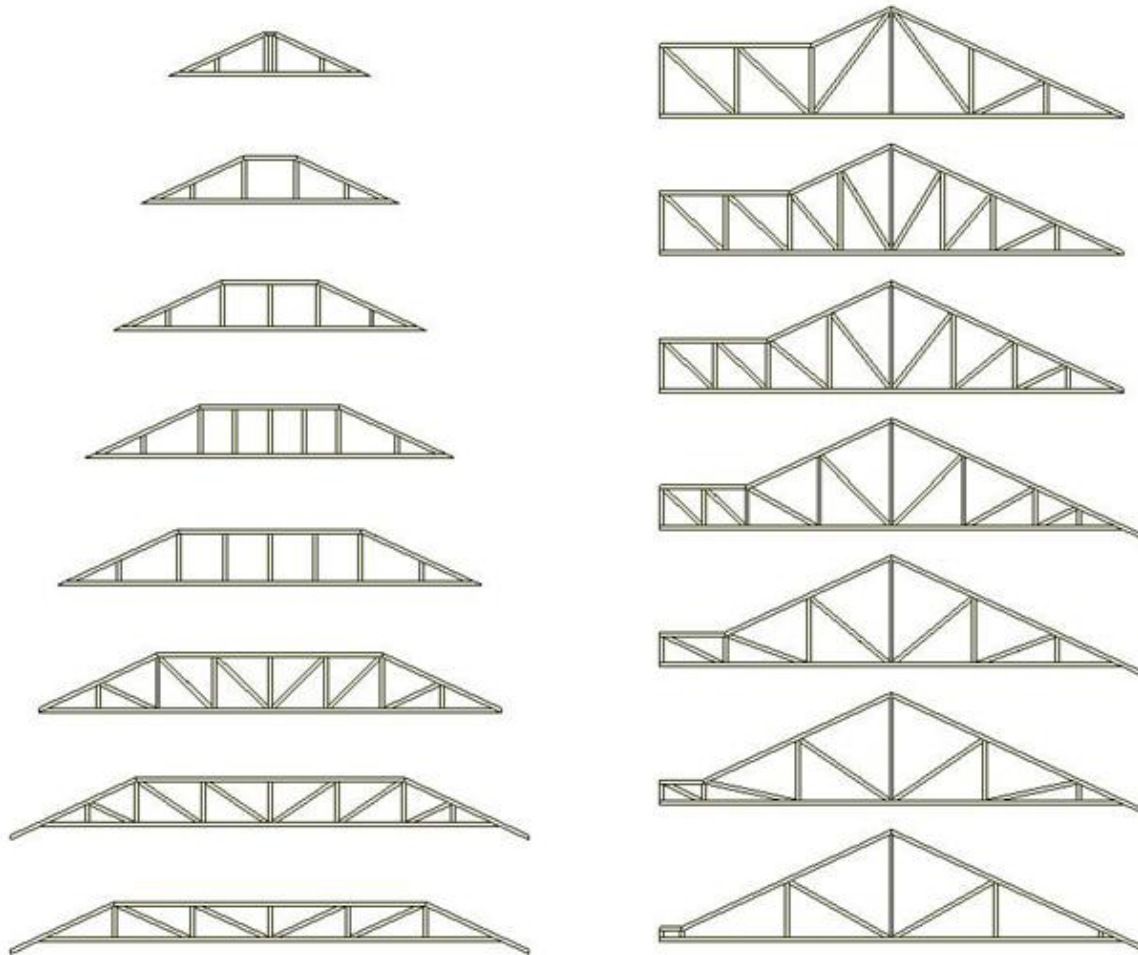
Truss Design Settings – Special Multitype Truss

- SPLM is the maximum value of the panel length. If it's exceeded, then the panel is divided with an additional web element.



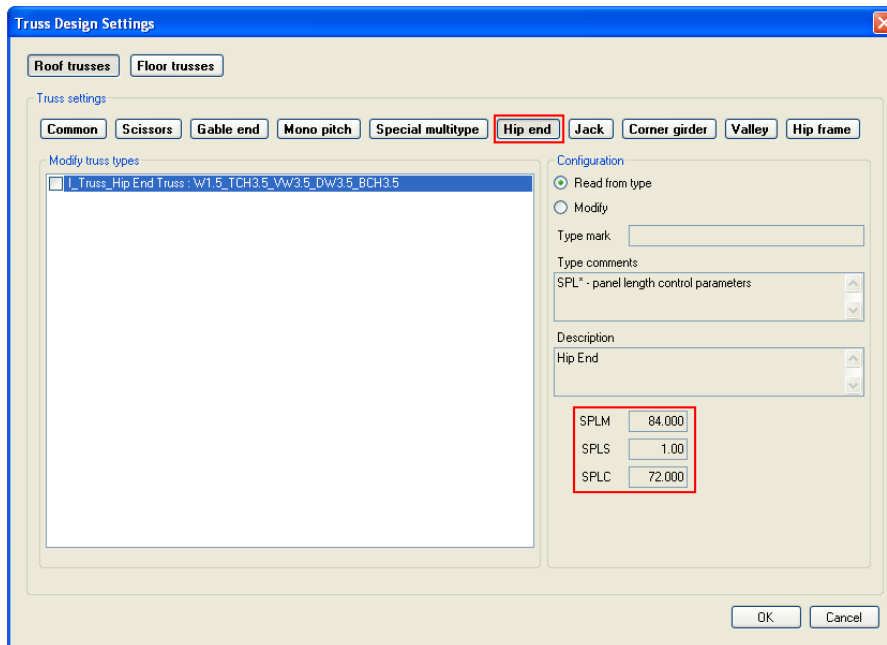
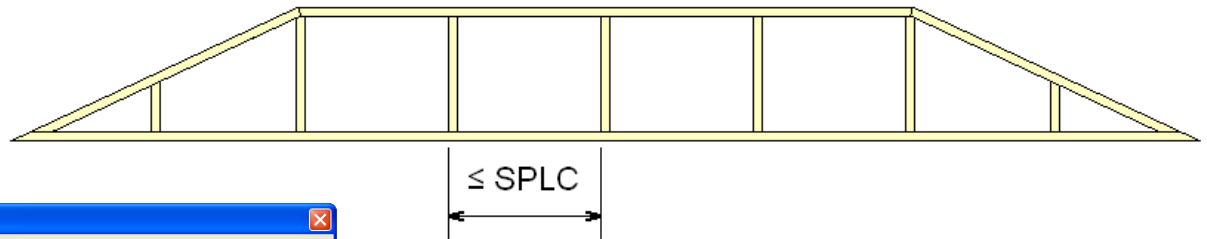
Truss Design Settings – Hip End Truss

- Various states of the one type truss.



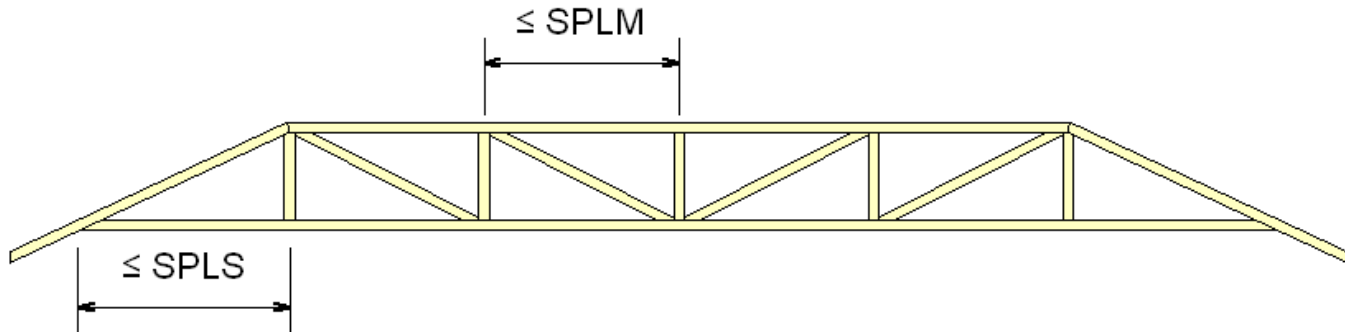
Truss Design Settings – Hip End Truss

- SPLC is evaluated as a maximum panel length only for valley hip end trusses.

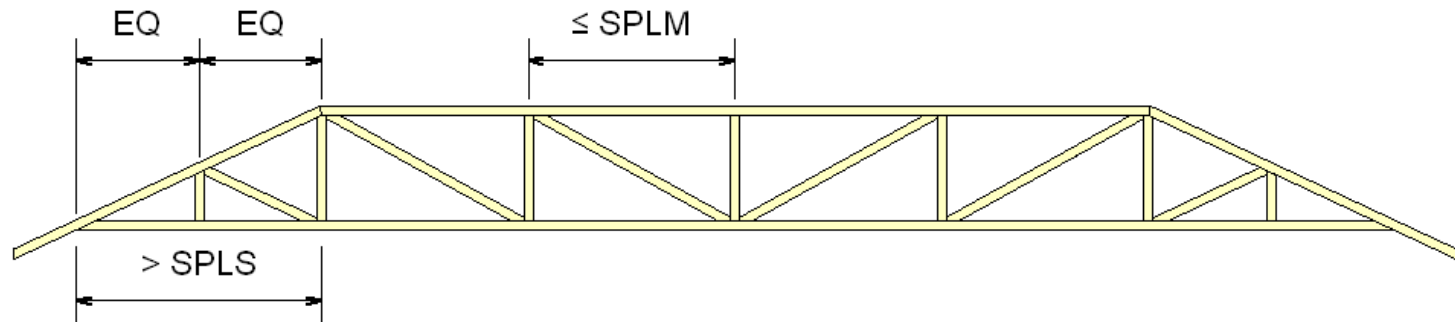


Truss Design Settings – Hip End Truss

- SPLM is the maximum value of the panel length for the top chord. If it's exceeded, then this panel is divided with an additional web element.

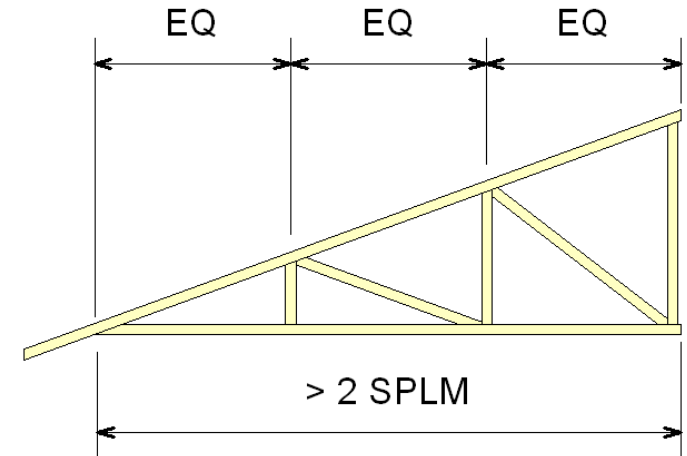
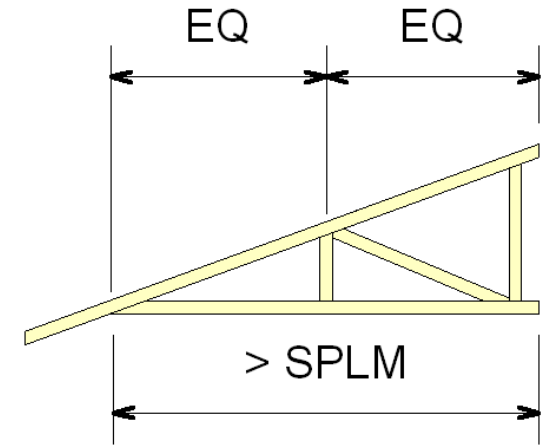
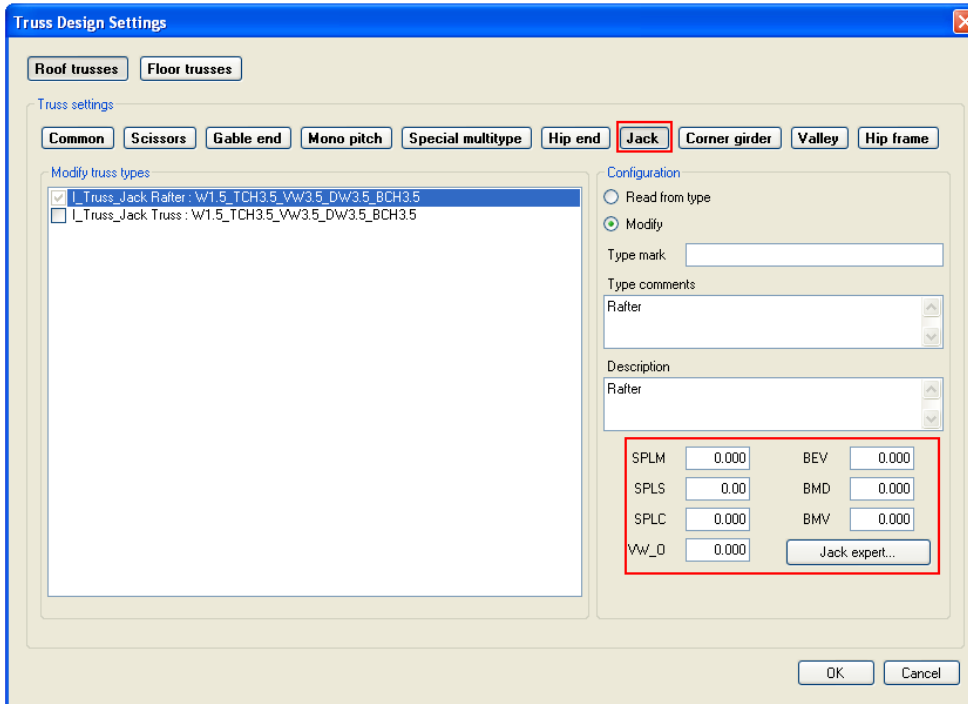


- SPLS is the maximum value of the panel length for the bottom chord. If it's exceeded, then this panel is divided with an additional web element.



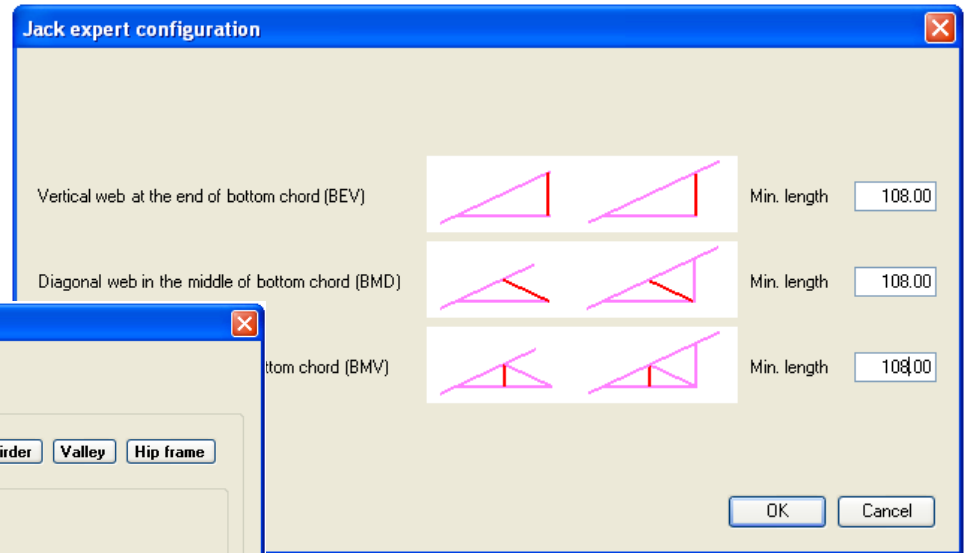
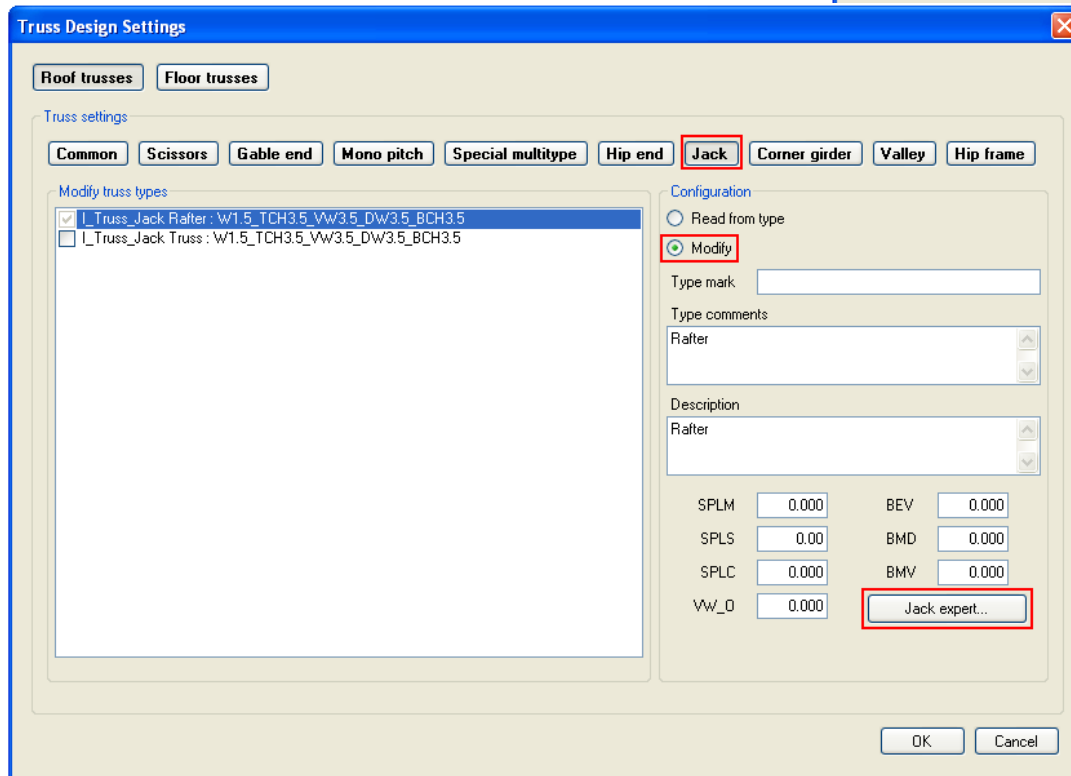
Truss Design Settings – Jack Truss

- SPLM is the maximum value of the panel length. If it's exceeded, then the panel is divided with an additional web element.



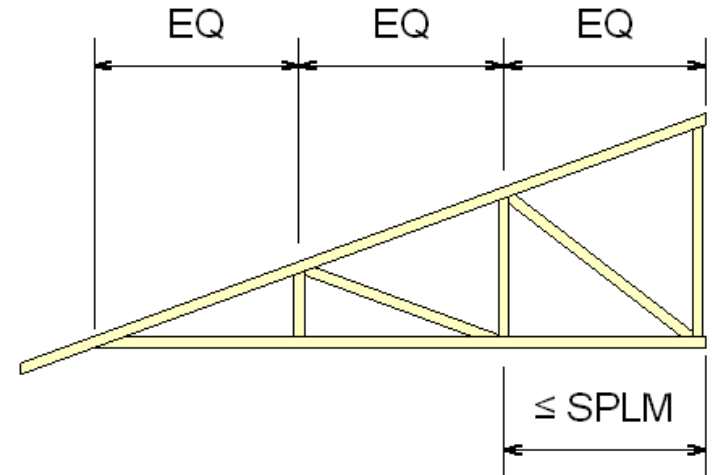
Truss Design Settings – Jack Truss

- Jack truss has an additional control function – *Jack expert*.

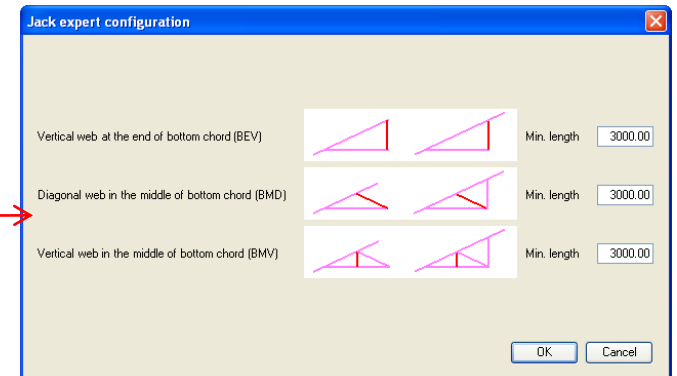
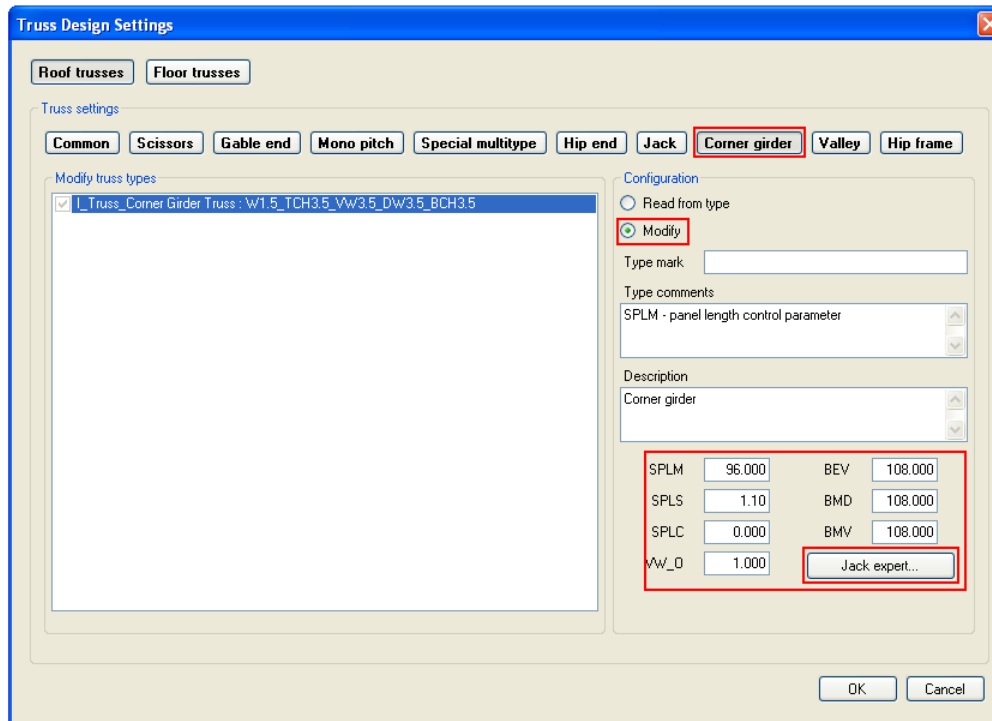


Truss Design Settings – Corner Girder Truss

- Corner girder truss has the same parameters as Jack truss.

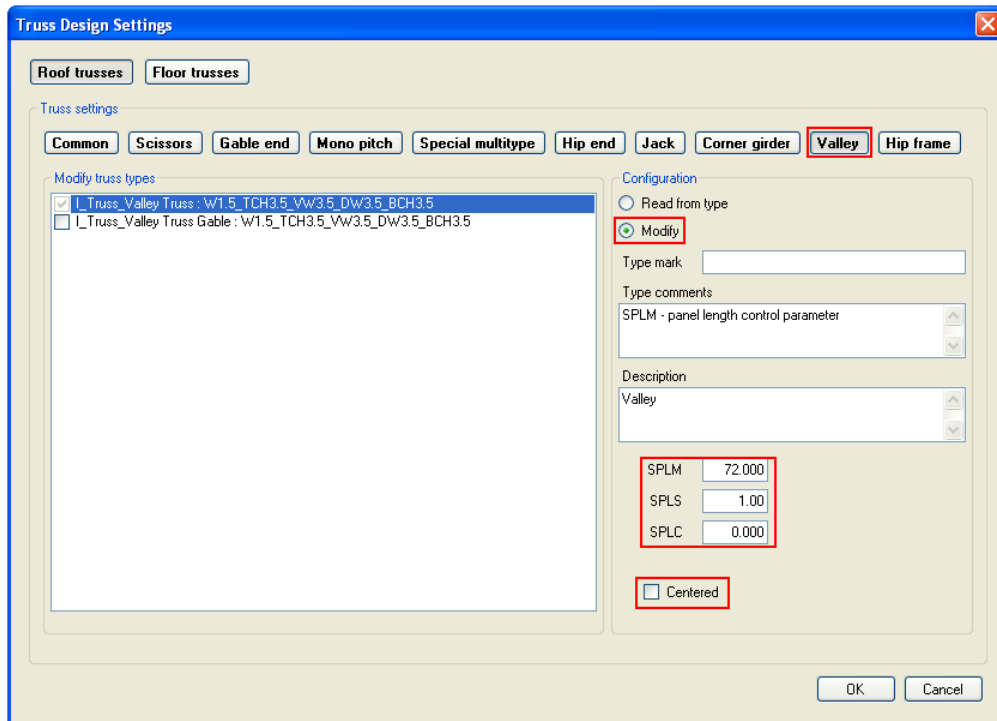


- Corner girder truss has an additional function – *Jack expert*.

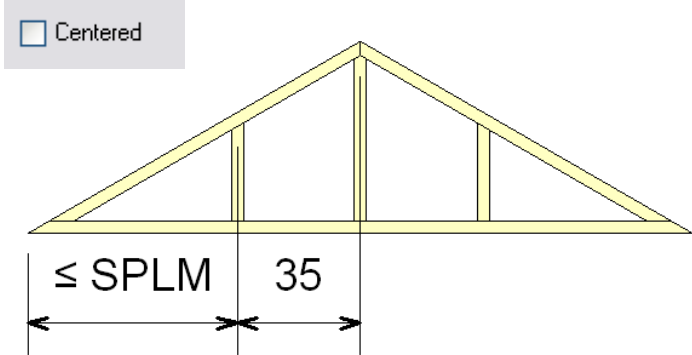


Truss Design Settings – Valley Truss

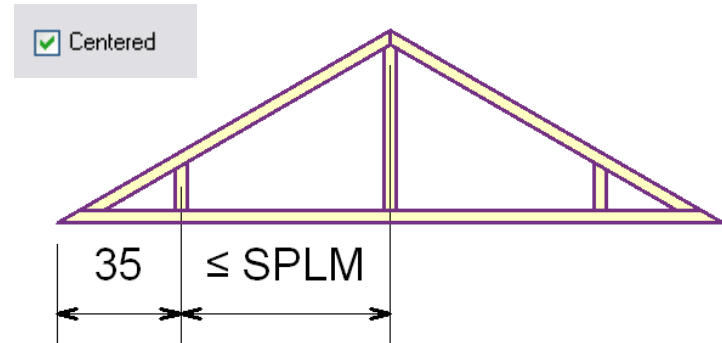
- SPLM is the maximum value of the panel length. If it's exceeded, then the panel is divided with an additional web element.



- Non Centered Valley truss



- Centered Valley truss



Increase your productivity !



AGA CAD Ltd.
Zalgirio 112A, LT-09300 Vilnius,
Lithuania
Tel. +370 5 2398111
Fax +370 5 2398113
Email info@aga-cad.lt
info@tools4revit.com
www.tools4revit.com