



# Truss+ 2010

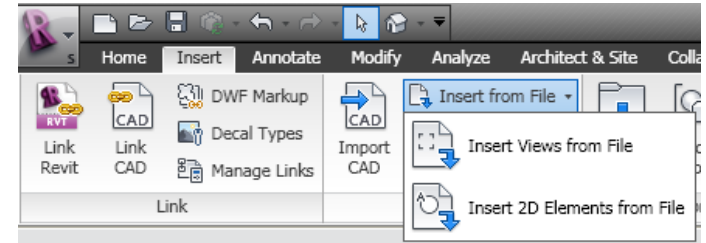
## Scheduling and Sorting

About schedules and the *Sort Trusses* function

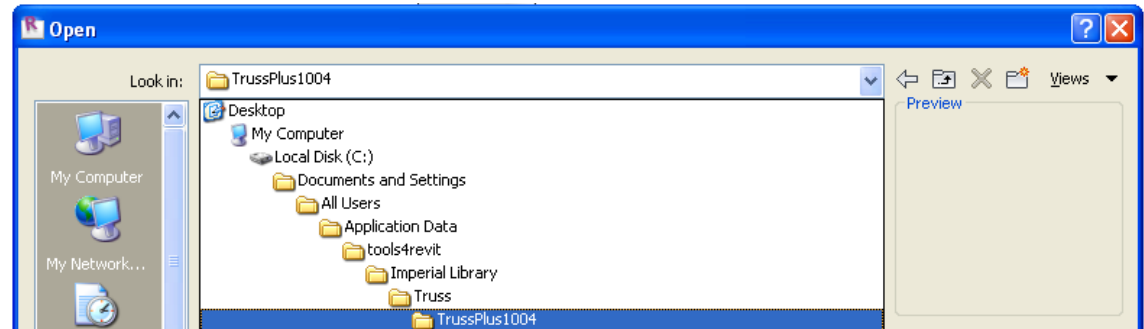


# Framing Member Schedules

Truss+ 2010.4 software installation includes some types of schedule views for roof framing members and elements scheduling. You can find them in the tools4revit folder.



You should use the command *Insert from file...views* to insert schedules to a project or template.



# Main Schedule

## “Framing Member-Mark Definitions”

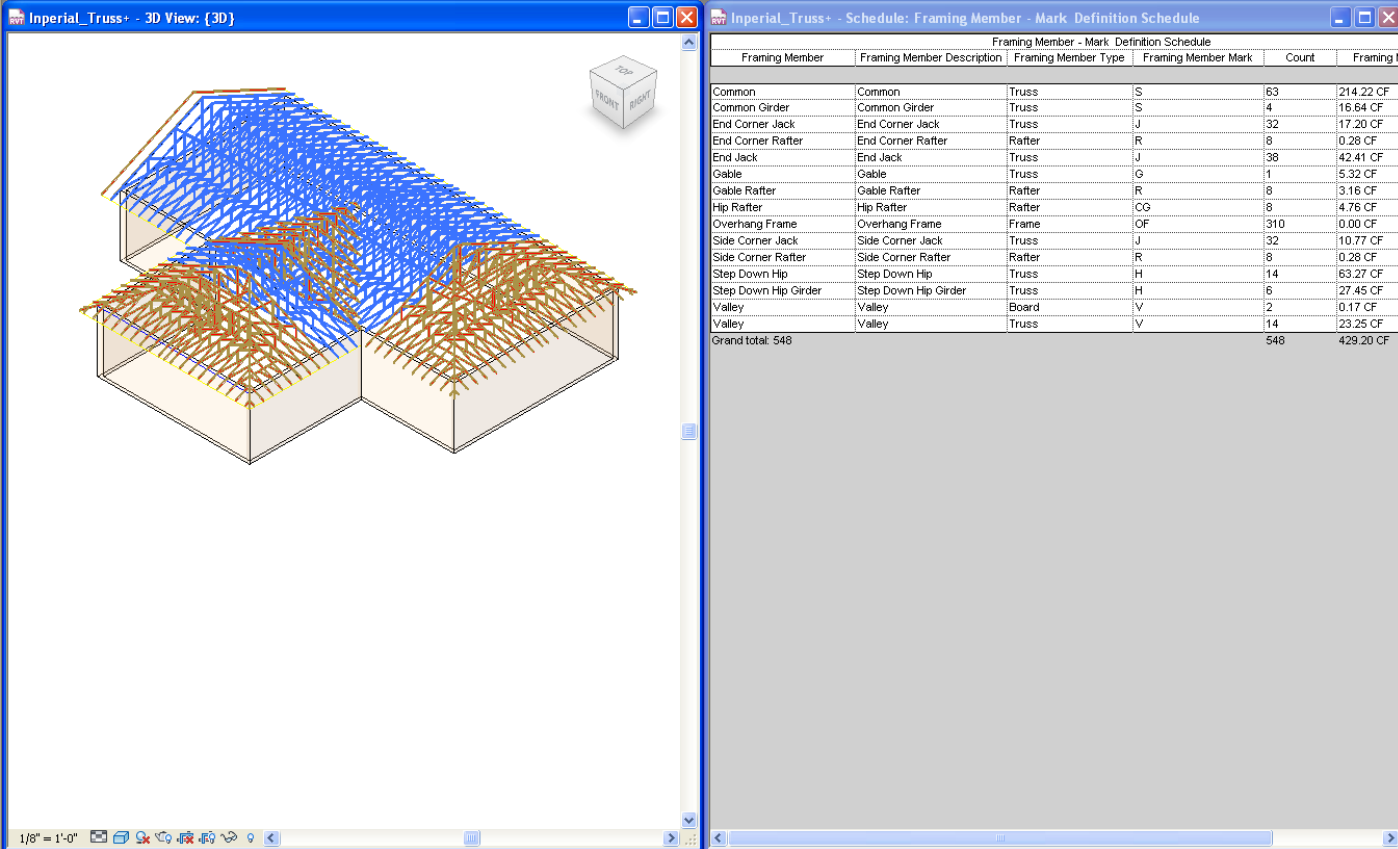
This schedule includes a number of predefined shared parameters which are assigned to framing members and elements. Schedule helps to define marking symbols for Sort and Mark procedures of framing members. The same type truss (rafter, beam) can play a different role in roof frame. User has an option to define the same or different mark symbol ('Framing Member Mark') for Framing Members. For example, the user can use the same or different marking for rafter and trussed end jacks.

User can edit default values of shared parameter – 'Framing Member Description' and use this parameter later for sorting and describing framing members in other schedules and tagging. To get true numbers in column "Framing Member Volume" (shared parameter) in this schedule, the user has to run the function *Calculate Truss Volume* before.

Framing Member - Mark Definition Schedule					
Framing Member	Framing Member Description	Framing Member Type	Framing Member Mark	Count	Framing Member Volume
Common	Common	Truss	S	63	214.22 CF
Common Girder	Common Girder	Truss	S	4	16.64 CF
End Corner Jack	End Corner Jack	Truss	J	32	17.20 CF
End Corner Rafter	End Corner Rafter	Rafter	R	8	0.28 CF
End Jack	End Jack	Truss	J	38	42.41 CF
Gable	Gable	Truss	G	1	5.32 CF
Gable Rafter	Gable Rafter	Rafter	R	8	3.16 CF
Hip Rafter	Hip Rafter	Rafter	CG	8	4.76 CF
Overhang Frame	Overhang Frame	Frame	OF	310	0.00 CF
Side Corner Jack	Side Corner Jack	Truss	J	32	10.77 CF
Side Corner Rafter	Side Corner Rafter	Rafter	R	8	0.28 CF
Step Down Hip	Step Down Hip	Truss	H	14	63.27 CF
Step Down Hip Girder	Step Down Hip Girder	Truss	H	6	27.45 CF
Valley	Valley	Board	V	2	0.17 CF
Valley	Valley	Truss	V	14	23.25 CF
Grand total: 548				548	429.20 CF

# Framing Member-Mark Definitions

User can use schedules to search and filter different framing members and elements. After selecting a field in the schedule table, all needed objects will be selected and shown automatically.



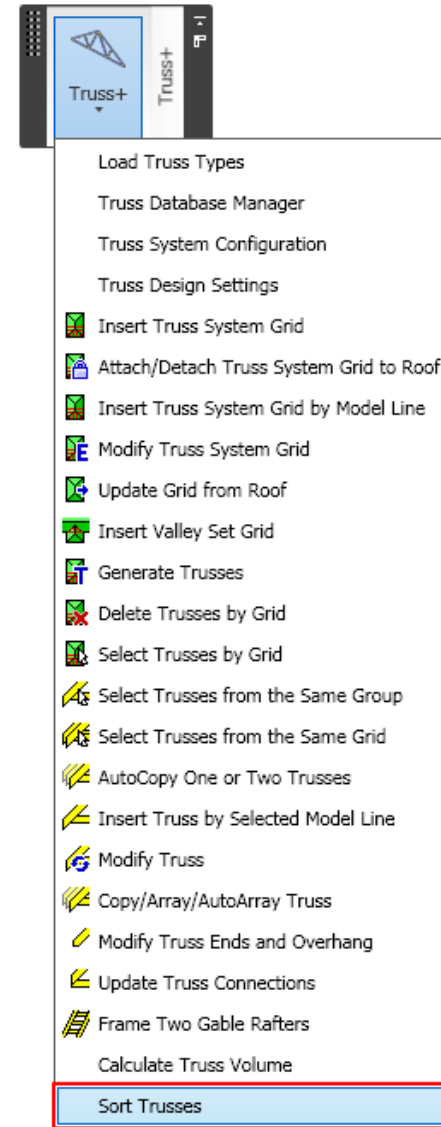
The screenshot displays the Inperial\_Truss+ software interface. On the left, a 3D view shows a complex truss structure with members highlighted in blue and orange. On the right, a schedule table titled "Framing Member - Mark Definition Schedule" is visible. The table lists various framing members, their descriptions, types, marks, counts, and framing marks.

Framing Member	Framing Member Description	Framing Member Type	Framing Member Mark	Count	Framing Mark
Common	Common	Truss	S	63	214.22 CF
Common Girder	Common Girder	Truss	S	4	16.64 CF
End Corner Jack	End Corner Jack	Truss	J	32	17.20 CF
End Corner Rafter	End Corner Rafter	Rafter	R	8	0.28 CF
End Jack	End Jack	Truss	J	38	42.41 CF
Gable	Gable	Truss	G	1	5.32 CF
Gable Rafter	Gable Rafter	Rafter	R	8	3.16 CF
Hip Rafter	Hip Rafter	Rafter	CG	8	4.76 CF
Overhang Frame	Overhang Frame	Frame	OF	310	0.00 CF
Side Corner Jack	Side Corner Jack	Truss	J	32	10.77 CF
Side Corner Rafter	Side Corner Rafter	Rafter	R	8	0.28 CF
Step Down Hip	Step Down Hip	Truss	H	14	63.27 CF
Step Down Hip Girder	Step Down Hip Girder	Truss	H	6	27.45 CF
Valley	Valley	Board	V	2	0.17 CF
Valley	Valley	Truss	V	14	23.25 CF
Grand total:	548			548	429.20 CF

# Function “Sort Trusses”

After editing Description and Mark fields the user can run the function *Sort Trusses*. It writes results to shared parameter “FM SortMark” and “FM HostMemberSortMark”.

All framing members will be grouped by Framing Member Mark and sorted (numbered) by geometrical parameters. The “FM HostMemberSortMark” parameter can be used for scheduling Framing Elements like truss chords and webs.



# Other Schedules

Software installation includes other examples of schedules views. User can edit properties of schedules if needed and use them in the project.

## Trusses – extended schedule (by Framing Member Description and FM SortMark)

Trusses - extended schedule							
Description	FM SortMark	Framing Member Span	Framing Member Length	Framing Member h	Pitch	Count	Volume
Common							
Common	S1	423.75	447.75	102.66	25.00*	10	0.00 CF
Common	S1	423.75	447.75	102.66	25.00*	28	128.56 CF
Common	S2	391.87	439.87	95.23	25.00*	6	25.93 CF
Common	S3	391.87	391.87	95.23	25.00*	2	8.32 CF
Common	S5	423.75	471.75	102.66	25.00*	6	0.00 CF
Common	S5	423.75	471.75	102.66	25.00*	11	51.41 CF
Common: 63						63	214.22 CF
Common Girder							
Common Girder	S3	391.87	391.87	95.23	25.00*	3	12.48 CF
Common Girder	S4	392.62	392.62	95.40	25.00*	1	4.16 CF
Common Girder:						4	16.64 CF
End Corner Jack							
End Corner Ja	J1	12.00	36.00	9.46	25.00*	8	1.11 CF
End Corner Ja	J4	108.75	132.75	21.00	25.00*	8	4.12 CF
End Corner Ja	J6	108.75	132.75	32.19	25.00*	8	4.77 CF
End Corner Ja	J8	108.75	132.75	43.38	25.00*	8	7.20 CF
End Corner Jack:						32	17.20 CF
End Jack							
End Jack	J9	108.75	132.75	54.57	25.00*	38	42.41 CF
End Jack: 38						38	42.41 CF
Gable							
Gable	G1	423.75	471.75	102.66	25.00*	1	5.32 CF
Gable: 1						1	5.32 CF
Side Corner Jack							
Side Corner J	J2	36.75	60.75	9.46	25.00*	8	1.71 CF
Side Corner J	J3	36.75	60.75	21.00	25.00*	8	2.37 CF
Side Corner J	J5	36.75	84.75	32.19	25.00*	8	3.02 CF
Side Corner J	J7	36.75	108.75	43.38	25.00*	8	3.66 CF
Side Corner Jack:						32	10.77 CF

## Rafters – extended schedule (by Framing Member and FM)

Rafters - extended schedule					
Framing Member	Sort Mark	Length	Pitch	Count	Volume
End Corner Rafter					
End Corner Rafter	R1	10.94	25.00*	8	0.28 CF
End Corner Rafter: 8				8	0.28 CF
Gable Rafter					
Gable Rafter	R2	235.87	25.00*	4	3.16 CF
Gable Rafter: 4				4	3.16 CF
Hip Rafter					
Hip Rafter	CG1	187.74	18.25*	8	4.76 CF
Hip Rafter: 8				8	4.76 CF
Side Corner Rafter					
Side Corner Rafter	R1	10.94	25.00*	8	0.28 CF
Side Corner Rafter: 8				8	0.28 CF
Grand total: 28				28	8.49 CF

# Other Schedules

## Framing Elements – compact schedule I

Framing Elements - compact schedule I			
Framing Member	Framing Member Type	Count	Volume
Bottom Chord	Chord	206	141.35 CF
Diagonal Web	Web	410	92.29 CF
Rafter	Rafter	24	6.88 CF
Top Chord	Chord	334	177.96 CF
Vertical Web	Web	588	87.30 CF
Grand total: 1562			505.78 CF

## Framing Elements – compact schedule II

Framing Elements - compact schedule II						
Framing Member	Framing Member Type	Framing Member d	Framing Member h	Count	Cut Length	Volume
Bottom Chord	Chord	1.50	3.50	204	47696.08	141.18 C
Bottom Chord	Chord	1.50	6.69	2	57.75	0.17 CF
Diagonal Web	Web	1.50	3.50	410	31259.75	92.29 CF
Rafter	Rafter	1.50	3.50	24	2311.94	6.88 CF
Top Chord	Chord	1.50	3.50	334	59188.63	177.96 C
Vertical Web	Web	1.50	3.50	588	30280.22	87.30 CF
Grand total: 1562					170794.37	505.78 C

## Framing Elements – extended schedule (by Framing Member)

Framing Elements - extended schedule						
Framing Member	Member Type	Width	Depth	Cut Leng	Count	Volume
CG1						
Top Chord	Chord	1.50	3.50	198.83	8	4.76 CF
CG1: 8						4.76 CF
G1						
Bottom Chord	Chord	1.50	3.50	423.75	1	1.26 CF
Top Chord	Chord	1.50	3.50	261.89	2	1.58 CF
Vertical Web	Web	1.50	3.50	6.58	2	0.04 CF
Vertical Web	Web	1.50	3.50	17.77	2	0.10 CF
Vertical Web	Web	1.50	3.50	28.97	2	0.17 CF
Vertical Web	Web	1.50	3.50	40.16	2	0.24 CF
Vertical Web	Web	1.50	3.50	51.35	2	0.31 CF
Vertical Web	Web	1.50	3.50	62.54	2	0.38 CF
Vertical Web	Web	1.50	3.50	73.73	2	0.44 CF
Vertical Web	Web	1.50	3.50	84.92	2	0.51 CF
Vertical Web	Web	1.50	3.50	95.30	1	0.29 CF
G1: 20						5.32 CF
H1						
Bottom Chord	Chord	1.50	3.50	423.75	2	2.53 CF
Diagonal Web	Web	1.50	3.50	55.70	4	0.64 CF
Diagonal Web	Web	1.50	3.50	67.37	8	1.59 CF
Top Chord	Chord	1.50	3.50	147.28	4	1.78 CF
Top Chord	Chord	1.50	3.50	207.75	2	1.26 CF
Vertical Web	Web	1.50	3.50	25.36	4	0.27 CF
Vertical Web	Web	1.50	3.50	47.22	6	0.66 CF
Vertical Web	Web	1.50	3.50	50.72	4	0.57 CF
H1: 34						9.50 CF
H2						
Bottom Chord	Chord	1.50	3.50	423.75	2	2.53 CF
Diagonal Web	Web	1.50	3.50	68.94	4	0.80 CF
Diagonal Web	Web	1.50	3.50	96.91	4	1.14 CF
Top Chord	Chord	1.50	3.50	159.75	2	0.97 CF
Top Chord	Chord	1.50	3.50	173.76	4	2.10 CF
Vertical Web	Web	1.50	3.50	30.96	4	0.33 CF
Vertical Web	Web	1.50	3.50	58.41	4	0.71 CF
H2: 24						8.58 CF

# Increase your productivity !



AGA CAD Ltd.  
Zalgirio 112A, LT-09300 Vilnius,  
Lithuania  
Tel. +370 5 2398111  
Fax +370 5 2398113  
Email [info@aga-cad.lt](mailto:info@aga-cad.lt)  
[info@tools4revit.com](mailto:info@tools4revit.com)  
[www.tools4revit.com](http://www.tools4revit.com)