

Revit for BIM Managers

Description

Duration: 2 Days

Students use their discipline specific version of Revit® 2009 to acquire essential skills and learn best practice techniques when managing projects within the BIM environment. Students begin the two-day course by becoming familiar with installation and configuration procedures then move on to exploring best practice methods when collaborating with consultants who may also be using the Revit® suite of products. Finally, students will gain an overall understanding of how to manage issues such as organisation and team structures as well as approaches that can be employed to affect a successful change to your company's work processes.

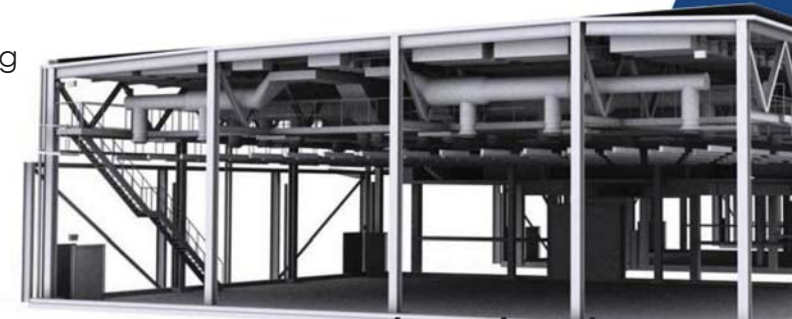
Course Objectives:

The primary objective of this course is to teach students the concepts and best practice methods to assist them in planning and executing their next BIM project. Working with other Revit® consultants is also a focus of the course and understanding the relationships and communications necessary to work together is a critical component of this training. At the completion of the course, students will be able to:

- Understand the hardware and installation requirements for BIM implementation.
- Develop best practice methodology when collaborating with other Revit® consultants.
- Define well planned setup procedures to ensure quality and consistent standards.
- Ensure sharing of Revit® data is reliable.
- Establish procedures to assist with choosing and managing the BIM project team.
- Formalise strategies to successfully implement BIM.

Who Should Attend & Prerequisites:

This course is designed for experienced users of Revit® Architecture, Structure or MEP 2009. Previous experience with using Revit® is a must. Students should already be capable of completing standalone projects. Experience in using File Linking and Worksharing is an advantage.



Revit for BIM Managers Course Structure:

Day 1

Setup

- Installation and Deployment
- System requirements/recommendations
- 32bit vs 64bit

Establishing and Maintaining Standards

- Configuring Standards
- Templates Setup and Methods
- Establishing a Method for Libraries
- Managing Libraries

Libraries

- Best Practise Content Creation
- Stages of Content Creation

Working with Consultants/Other Disciplines

- Best Practise Approach to Working with Other Consultants
- Preparing your Model for Sharing with Consultants
- Who Owns What in the Model
- Working with CAD files (Import/Export)
- Sharing Models for Coordination
- Sharing Models for Clash Detection
- File Linking

Working with Large Teams

- Setting Standards for Naming Conventions
- View Naming Standards and View Templates
- Families
- Browser Setup

Day 2

Project Coordination

- Project North/True North
- Shared Coordinates
- Linking vs Importing CAD Files
- Link Management
- Visibility Control of Linked Models
- Groups Best Practise
- Linking vs Groups

Project Health Checks Best Practise

- Auditing
- Compacting/Purge
- Review Warnings

Analysing Projects for BIM

- Analysing a Project for Revit
- Revit Project Team Allocation
- Roles within Revit Projects

Managing Revit for Performance

- Multiple Users – Worksets Approach and Best Practise
- Approaches to Project Break-up
- Opening/Saving Performance

Implementation

- Best Practise
- Training and Training Approaches
- Change Management Basics

